



Friday 4th November 2022
The Royal Lancaster Hotel

#SWA22



@socialworkaward

www.socialworkawards.com



Welcome to the Social Worker of the Year Awards

#SWA22

Welcome from The Board of Trustees. It is so good to see you all in person!

The rhythms of an awards ceremony might feel familiar, but the way we work has evolved so much since we last came together for this event.

Social work practice always evolves – creative practice, the use of technologies, culturally sensitive practice, and a more multi-agency approach. And yet social work always stays the same, as people come together to give voice to their needs, to have their experiences heard and validated to work together towards a positive outcome.

As a not-for-profit charity set up by a social worker, the Social Work Awards have grown to become a unique space for celebration and inspiration. The stories of winners are published in the media and within the social work community to further public understanding of the profession and to shine a light on the many, many examples of important and effective social work happening in our communities every day.

Life is full of joy and struggle and a social worker's day reflects this. Social workers have always worked in challenging conditions and this year has proved no different. There are important learnings from the thousands of cases where outcomes are positive, and especially those where the outcomes are life-changing. Every year brings new champions of good practice into view and that's why we are here, to celebrate, to be inspired, to learn and to share.

This is why we are all here tonight, allowing ourselves to take pride and joy in the positive.

Thank you so very much to every one of our sponsors for making this event possible and for standing proud in support of social workers doing their best to make a positive difference. Thanks go to all the people who made hundreds of nominations and to our judges who faced up to the difficult task of deciding what makes an award winner when presented with so many examples of brilliant practice.

And congratulations to our winners and all our finalists who have demonstrated outstanding commitment to driving social justice and supporting the transformation of lives in your communities and beyond. You are the very best in social work – enjoy your night.

The Board of Trustees, Social Work Awards Ltd.

Registered in England No. 07581130
Registered Charity No. 1144458



The Board of Trustees

From top (L-R): Ana Popovici, Brian Mitchell, Clenton Farquharson MBE, Ellisha Karssemakers, Gary Spencer-Humphrey, Kelly Centro, Peter Hay CBE, Rob Mitchell MBE, Sammie Critchley, Sherry Malik.

A special thanks to our Sponsors

Headline Sponsor



Corporate Partner



Category Sponsors



Lorraine Pascale

"I am delighted to be a patron of The Social Work Awards. I spent some of my childhood in care so I know from personal experience that the role of the social worker is so critical and important. I am particularly passionate about raising awareness of fostering and it is vital to recognise those involved at every stage of the process, who have had a positive impact on young people's lives."



Tim Loughton MP

"During my time as Children's Minister and as Shadow Children's Minister for many years before that, I saw first-hand the dedication and compassion with which our social workers care for the most vulnerable and disadvantaged children, families and adults. So it is a privilege to be invited to be a patron of The Social Work Awards charity. It is a cause I hugely respect and I remember well meeting the first winner of the title. The awards do a great deal to recognise the extraordinary efforts of our social workers, who give so much and give up so much to help others."



Emma Lewell-Buck MP

"I am thrilled to be a patron of The Social Work Awards. I know first-hand that there are few jobs more emotionally difficult and yet more personally rewarding than being a social worker. It's great that there is now a place that recognises the fantastic and vital work of the social work profession and the many outstanding individual contributions to society."



The Baroness Howarth of Breckland OBE

"Social work has been my life and I am committed to ensuring that the profession maintains high standards. I am therefore absolutely delighted to be asked to fulfil this role and hope that I will be able to do more to ensure that the future of social work remains at the centre of Government. The awards play a very special part in contributing to maintaining these goals."



Running order

We are delighted to welcome back BBC broadcast journalist and presenter, Ashley-John Baptiste, as our special guest this evening to present the awards.

This will be Ashley's third time hosting the awards ceremony. As a care leaver himself, Ashley is passionate about raising the aspirations of looked-after children and fully credits his social worker for helping him get to where he is today.

18:00 – Welcome

18:30 – Take your seats

18:40 – Welcome by Peter Hay CBE, Chair of the Social Work Awards Board of Trustees

19:00 – Dinner is served

20:30 – Awards ceremony follows in the order below:

Introductions – Peter Hay CBE, Chair of the Board of Trustees

Speaker – Vava Tampa – Chair of BASW England

- ◆ **Student Social Worker of the Year**
- ◆ **University of the Year**
- ◆ **Newly Qualified Adult Social Worker of the Year**
- ◆ **Newly Qualified Children's Social Worker of the Year**
- ◆ **Practice Educator of the Year**

Speaker – 'In Our Shoes' by a member of the Family Justice Young People's Board at Cafcass

- ◆ **Team of the Year, Adult Services (including MDTs)**
- ◆ **Team of the Year, Children's Services (including MDTs)**
- ◆ **Supportive Social Work Employer of the Year**
- ◆ **Team Leader of the Year, Adult Services**
- ◆ **Team Leader of the Year, Children's Services**

Speaker – Vivian Okeze-Tirado – 2021 winner of the Social Justice Advocate Award and Overall Social Worker of the Year

- ◆ **Digital Transformation in Social Work Award**
- ◆ **Supporting Children in Education Award**
- ◆ **Social Justice Advocate Award**
- ◆ **Special Commendation**

Speaker – Speaker- Social Work Student Connect Team

- ◆ **Mental Health Social Worker of the Year**
- ◆ **Adult Social Worker of the Year**
- ◆ **Children's Social Worker of the Year**
- ◆ **Lifetime Achievement Award**
- ◆ **Overall Social Worker of the Year 2022**

Thank you to our judging panel

Alexandra Capitani

Children's Social Worker of the Year 2021

Andrew Reece

Head of Integrated Learning Disability Services and interim Head of Mental Health Social Work Adult Social Care, Camden Council

Asmaat Khan

ASWE Social Worker, Essex County Council

Bethany Erickson Rodrigues

Independent Senior Social Worker

Bev Knowles

Advanced Practice Educator, Cornwall Council

Bev Williams MBE

Founding Patron of the Social Worker of the Year Awards

D. Aleski Brandy-Williams

Senior Social Worker and Sessional EDT Social Worker, London Councils

Deb Solomon

Social Worker and Temporary Practice Development Lead, Derbyshire County Council

Diana Harris

Chair, BASW Coventry & Warwickshire Branch

Dinah

CLICK (Children Living in Care Kouncil), Wandsworth Council

Dr Mark Brookes MBE

Advocacy Lead, Dimensions

Elizabeth Njenga

Chair, BASW Buckinghamshire Branch

Ella Waughman

Social Worker, Cambridgeshire County Council

Fran Leddra

Former Chief Social Worker for Adults at the Department of Health and Social Care

Gergo

Family Justice Young People's Board, Cafcass

Jak Savage

Independent Employer and Social Care Consultant

Jason Brandon

Mental Health Social Work Lead, Department of Health and Social Care

Joseph Robb

Service Manager Looked After Children Resources, Darlington Borough Council

Juliette Cammaerts

Director of Policy Planning and Delivery, Office of the Children's Commissioner for England

Karen Mistry

Social Work Practice Development Lead, Nottinghamshire County Council

Kudakwashe Kurashwa

Team Leader of the Year 2021

Laura

Family Justice Young People's Board, Cafcass

Lisa

Family Justice Young People's Board, Cafcass

Maris Stratulis

National Director, BASW England

Melanie Noel

Adult Social Worker of the Year 2021

Nikki Rutter

Teaching Fellow, Durham University

Noel Beckett

Interim Safeguarding, QA Practice Improvement and Performance Strategic Lead, Oxfordshire County Council

Patriche Bentick

Senior Practitioner, Camden Council

Sabira Ladha

Acting Team Manager, Essex County Council

Sarah Harrison

Co chair, BASW Student and NQSW Group

Tara Morgan

Independent Social Work Practitioner

Vava Tampa

Chair, BASW England

Vicci Livingstone-Thompson

CEO, Inclusion Gloucestershire

Vivian Okeze-Tirado

Social Justice Advocate Award 2021 winner and Overall Social Worker of the Year 2021

Yvonne Frimpong

Social Worker



Finalists

Student Social Worker of the Year 2022

Supported by Torbay Council

Denford Duri	University of Hull
Momoh Etunu Suleman	University of Bradford
Natasha Round	The Open University / Devon County Council
Shannon Briddon	Nottingham Trent University
Solomon Tugbiyele	Anglia Ruskin University
Stephanie Burns	University of Sunderland

University of the Year 2022

Supported by Coventry City Council

Oxford Brookes University
Solent University, Southampton
University of Chester

Newly Qualified Adult Social Worker of the Year 2022

Supported by Devon County Council

Anna Boddy	City of York Council
Cheryl Dixon	Stockton-on-Tees Borough Council
Helen Southgate	Suffolk County Council
Naomi Thompson	Worcestershire County Council
Sehrish Zeb	Essex County Council
Tracy Bell	Lancashire County Council

Newly Qualified Children's Social Worker of the Year 2022

Supported by Children's Social Work Matters (CSWM)

Amy White	Essex County Council
Dawn Bedwell	Essex County Council
Mi-Gyung Kim	Achieving for Children
Skerntian Keri	Wiltshire Council
Joe Harrison	Essex County Council
Ivanna Finn	London Borough of Wandsworth
Maisie Pearce-Connor	London Borough of Hounslow

*Kasibba is not their real name

Practice Educator of the Year 2022

Supported by BASW

Roz Ryder	Shropshire Council
Carolyn Smith	Wakefield Council
Sue Powell	Essex County Council
Minette Moorhouse	Northumberland County Council
Jackie Flynn	Essex County Council
Laura Webb	Bedford Borough Council

Team of the Year, Adult Services 2022 (including MDTs)

Supported by UNISON

Enhanced Support Team, Derbyshire County Council
The Team around Kasibba*: Camden Integrated Learning Disability Service, London Borough of Camden and Camden and Islington NHS Foundation Trust
Social Work Student Connect Team
Central Adult Safeguarding Team, Suffolk County Council
Day Unit Multi-Disciplinary Team (MDT), Mary Stevens Hospice
Independent Futures Team, Hampshire County Council

Team of the Year, Children's Services 2022 (including MDTs)

Supported by London Borough of Lambeth

Kingston and Richmond Leaving Care / UASC Team, Achieving for Children
Reunification Team, Coventry City Council
24/7 In The Home Programme Team, Advanced CCA
Social Work Student Connect
Families First Fostering
Make a Change Team (MAC), Suffolk County Council

Supportive Social Work Employer Award 2022

Supported by Sanctuary Personnel

Children and Young People Service, Wakefield Council
Stockton-on-Tees Borough Council
Children's Social Care, Durham County Council
Children's Services, Torbay Council

Team Leader of the Year, Adult Services 2022

Supported by Suffolk County Council

Ian Hall	Northumberland County Council
Tom Woodd	Devon County Council and Devon Partnership NHS Trust
Karen Aspinall	Essex County Council
Louise White	Somerset County Council
Lucy Hunt	Devon County Council
Janet Hardy	Somerset County Council

Team Leader of the Year, Children's Services 2022

Supported by Suffolk County Council

Cheryl Grazette	Hertfordshire County Council
Helen Harding	London Borough of Havering
Ayshea Dalby	Leicestershire County Council
Heather Johns	Manchester City Council
Michelle Morris	Aspris Fostering Services
Yvette Lima	Achieving for Children

Digital Transformation in Social Work Award 2022

Supported by West Midlands ADASS

Social Work Student Connect
Social Work Team, Mary Stevens Hospice
Hull City Council
Essex TEC Partnership, Essex County Council, Millbrook Healthcare and Provide CIC
Festival of Learning, Stockton-on-Tees Borough Council
Adult Learning Disabilities and Innovation Team, Norfolk County Council

Supporting Children in Education Award 2022

Supported by Staffordshire University

Charlotte Elliot	Devon County Council
Lauren Main	Gloucestershire County Council
Samantha Gilham	London Borough of Camden

Social Justice Advocate Award 2022

Supported by BASW

Andrea White	Stockton-on-Tees Borough Council
Ivor Wepke	Birmingham Youth Offending Service
Kirstie Baughan	Central Bedfordshire Council
Millie Kerr	Brighton and Hove City Council
Social Work Student Connect	

Mental Health Social Worker of the Year 2022

Supported by S12 Solutions

Charlotte McFarthing	Tees, Esk and Wear Valleys NHS Foundation Trust
Elvis Jeremiah	Humber Teaching NHS Foundation Trust
Tara Mitchell	Leeds and York NHS Partnership Foundation Trust
Sarah Asprey	Devon County Council
Lynn Counter	Cornwall Council

Adult Social Worker of the Year 2022

Supported by Hampshire County Council

Deborah Solomon	Derbyshire County Council
Clare Fisk	Suffolk County Council
Bhavna Maher	Leicester City Council
Karen Turner	Sunderland City Council
Sally Adams	Salford Care Organisation, Northern Care Alliance NHS Group
Jennifer Paddock	Gloucestershire County Council

Children's Social Worker of the Year 2022

Supported by London Borough of Wandsworth

Annmarie Nero	Achieving for Children
Bobbie Dean	Norfolk County Council
Kathryn Vayro	Derby City Council
Nathan Head	Durham County Council

Lifetime Achievement Award 2022

Supported by Essex County Council

Elizabeth Parry	Sunderland City Council
Tony Wright	Forward Assist
Suzanne Brown	NAVIGO
Owen Garrod	Norfolk County Council
Sarah Lowe	
Val Swan	Sunderland City Council

Overall Social Worker of the Year

Supported by Sanctuary Personnel

The Overall Social Worker of the Year has been chosen by The Board of Trustees from the shortlist of the category winners

Proud sponsors of the Social Worker of the Year Awards

Helping one person might not change the world, but it could change the world for one person.

Making the right match.

We see our role as having a ripple effect. So in finding you a position that you can thrive in, we're doing our little bit to help the people who need your care and support.

By digging deeper than your CV, we get to know everything about you – how you prefer to work, the teams that most appeal to you, and how you see yourself using and building on your existing social work skills and experience.

When you register with us, you can expect to:



Only hear about job roles that are a perfect match



Instant access to hundreds of social work jobs



Discover new and exclusive opportunities



Experience a fast and easy application process



Receive specialist support at every step in your career

To register, please visit sanctuarypersonnel.com



Sanctuary Personnel

Although the last two virtual Social Worker of the Year Awards brought the social work community together at a time when it was most needed, we cannot wait to celebrate with you in person again.

These awards continue to give the social work community a rare moment to pause and reflect on what's possible when people are given the opportunity to make a positive impact.

We chose to sponsor the 'Supportive Social Work Employer' award as it recognises how important it is for everyone to feel valued and empowered in their practice. There is no doubt that the last couple of years have added enormous pressure to services already in high demand. Yet, despite this, there are some incredibly inspiring employers who continue to excel at creating the best environment for social work practice.

Likewise, as sponsors of the 'Overall Social Worker of the Year' award, we feel humbled by the truly ground-breaking individual practice that is happening within communities. All of the finalists share a selfless desire to help others and think creatively about in their practice.

Whether you won an award tonight, have been shortlisted or even just attended the ceremony as a guest, you deserve an applause.

At times, social work can feel unrelenting, but it is people like you who give others hope for a brighter future. So, please raise a glass tonight as we celebrate the achievements of everyone in the room. The impact you have on the lives of others is nothing short of remarkable, and for that, I would like to say, thank you.

James Rook

Chief Executive Officer
Sanctuary Personnel



BASW offers services that protect, support and develop your social work career, and supports you to shape the profession and our context.

BE PROTECTED £5 million of professional indemnity insurance. *Please note: student members are only covered for professional placements.**

BE REPRESENTED Get advice from BASW Advice and Representation, a team of qualified social workers, for professional and regulatory help. Opt in to the Social Workers Union from £2.08 per month for full, tailored employment help and protection services.*

BE PROGRESSING Develop your career. Learn about the latest social work practice developed by and for social workers. Log your CPD from a range of free or discounted training, online resources and events.

BE INFORMED Professional Social Work (PSW) magazine – the UK's only printed social work magazine – delivered free to your door six times a year. Member-only free access to selected resources online.

BE ETHICAL BASW's Code of Ethics along with a full range of guidance and policies, upholds the highest professional standards and practice.

BE SAVING Save up to 75% on social work journals and books. Plus heavily discounted and free CPD and events. 50% discount on student membership for first post-qualifying year.*

BE SUPPORTED Free Professional Support Service – offering essential space and support for members to talk and think through issues, including Covid 19. Apply for financial support grants for education, hardship or international work.

BE RECOGNISED Show your commitment to professional practice and use MBASW after your name.

BE INDEPENDENT A bespoke membership for self employed social work professionals. Access Social Work Employment Services – competitively priced exclusive umbrella service for BASW members*. Be listed as a specialist in our directory.

BE CONNECTED Meet like-minded colleagues, through branches, events and special interest and other groups to share ideas, discuss practice, policies and develop our profession together. Join our community of social workers online – through Twitter, Facebook and LinkedIn.

BE HEARD The powerful voice of over 22,000 members, building the strength and influence of social work and calling for urgent action on issues that really matter. Be active in campaigns. Join one of our member committees, groups and networks to shape policies.



**BASW
England**

The professional association for
social work and social workers

BASW is the independent professional association for social work.

Join online at www.basw.co.uk

* Terms & Conditions apply – for full details visit www.basw.co.uk

**BASW
England**

The professional association for
social work and social workers

BASW England is proud to be a Corporate Sponsor of Social Worker of the Year Awards 2022. The last 18 months have been incredibly challenging for the individuals and communities we serve and work with and continue to be so. You have continued to provide incredible support and services, day and night, pre and during the pandemic, financial hardship in a complex political and reform landscape. We continue to shine a light on the fantastic work that you do – thank you.

These Awards celebrate the shared qualities, skills, knowledge, and professionalism of social workers. Your kindness, compassion, creativity, innovation, unshakeable tenacity, commitment, and steadfast focus as you champion the needs of children, families, adults and communities in our society is to be commended.

We celebrate the social work profession in all its rich diversity and its connectedness. From students and newly qualified social workers starting out on their social work careers, to educators, researchers, generic and specialist practitioners, professional leaders and experienced social workers dedicated to working in direct practice.

We understand the importance of the connections you foster and keep. Connections between you and your colleagues, the people you support, your communities and the organisations that provide you with the foundation to help you simply 'get on with the job'.

We are one profession; a global profession with a rich history and a lifetime of stories and exceptional accomplishments to be celebrated.

BASW England applauds the contributions of every social worker in the profession and will be celebrating your exceptional work and professionalism by sponsoring Practice Educator of the Year and the Social Justice Award.

As the only independent UK professional social work membership organisation, BASW provides support to social workers, the opportunity to network with colleagues across the UK and internationally. We provide continuous Professional Development, toolkit resources and guidance, professional support services and work hard lobbying government on the issues that matter to you.

We are committed to anti-racism, anti oppressive practice and the active promotion of equality and diversity.

We are with you every step of the way, championing social work and helping our members achieve the highest professional standards whilst affording you a voice and continual support in the excellent work you do. BASW pledges to work tirelessly to continue to support you and to promote the social work profession.



Vava Tampa
Chair,
BASW England



Maris Stratulis
National Director,
BASW England

Social work plays a vital role in our society. It is a rewarding profession that makes a real difference to people's lives, championing wellbeing and human rights while supporting people to come through often truly challenging times. It's also a job that can be both demanding and difficult. That's why Hampshire County Council is delighted to sponsor these awards, highlighting the exceptional work undertaken by social workers across the country every single day.

We have been closely associated with the Awards through our sponsorship for some years, and this year we are delighted to continue that association by sponsoring the 'Adult Social Worker of the Year' category.

This is a category that gets to the heart of what it is to be a social worker, celebrating examples of great outcomes that showcase outstanding social work practice with adults. Hampshire County Council is proud of its reputation for real commitment to social care and excellence in social work practice. We are committed to championing the vital contribution social workers make so that every person who needs care and support is valued, respected and has the best opportunities possible.

We hope these awards continue to inspire and encourage everyone working in social care and look forward to congratulating the successful nominees!

We are delighted to once again be taking part in the Social Worker of the Year Awards. Thank you to every social worker that is committed to making a difference, supporting, and advocating for children and families in our communities. Through the Social Worker of the Year Awards and in our everyday practice, we celebrate your hard work and phenomenal impact.

There is nothing more important than social workers ability to build relationships with people, support them and improve the lives of them and their families. It takes vision, compassion, hope, understanding, tenacity and skill to successfully establish a bond with people who have previously felt let down or failed by services. That is what makes social work such an incredible profession, one that believes in the human value of vulnerable people and their right to live the best possible lives.

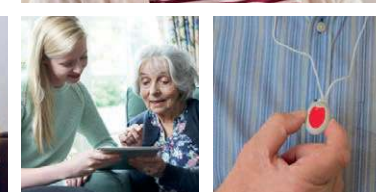
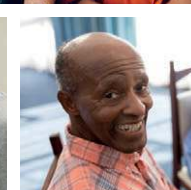
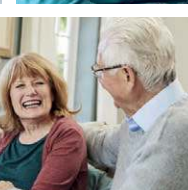
To help social workers deliver their absolute best, we've developed our Outstanding Practice Framework. We recognise families are resourceful and have strengths, and that by harnessing and building on these we will support their capacity to change without creating an overdependence on our services or unnecessary intervention in their lives.

Wandsworth is thrilled to have been the first council in London to implement Family Safeguarding, an approach where multi-disciplinary specialist practitioners are co located within children social work teams. It has a whole family focus and aims to keep children safely at home.

To find out more about joining Wandsworth, accessing high quality CPD opportunities and social work career progression, visit our careers page <https://www.wandsworth.gov.uk/jobs-and-careers/childrens-social-care-jobs/>

Congratulations to all the finalists of the Social Worker of the Year Awards 2022

This year, we are proud to sponsor the award for Adult Social Worker



**Our Social Workers are our greatest asset,
together we will achieve the best outcomes
for the people we serve in Wandsworth.**



Find out more about working for Wandsworth Council,
visit: [wandsworth.gov.uk/jobs-and-careers](https://www.wandsworth.gov.uk/jobs-and-careers)

Designed and produced by Richmond and Wandsworth Design & Print • wdp@wandsworth.gov.uk • CS1965(8.21) A



Celebrating success is at the heart of how we do things in Devon. We know just how tough but amazingly rewarding social work can be, we are proud when we see what a difference we are making to people's lives.

We strive to create safe, supportive and inclusive workplaces, so no matter what background or role a person has they feel welcomed, valued and respected and can be the best version of themselves.

Devon is an authority that is always looking to improve, to bring in new ideas and learn from others and from the experience of those already working and living in Devon. Like every other authority, we've learnt a lot through the pandemic, about ourselves and the people we support.

Our Children's Service is committed to delivering a relational and restorative approach to practice working with partners to implement empowering families, so they can help their children achieve their goals.

Our Adult's Service is committed to co-production with people, families and the whole health and care system, ensuring the voice of the person with lived experience is at the centre of what we do, and what we do is strength based and promotes independence.

As a whole council we have embraced change, done things differently, and better, and more people have seen just how vital social care is for people, for families, and to create a civilized and meaningful society where all individuals have a stake in the future.

If this sounds like the place for you, then it probably is, especially if living and working in an amazing and beautiful place is important to you!

We recognise the hard work and dedication of children's social workers right across the country and the Social Worker of the Year Awards always provide an evening full of inspirational stories. It's a vital opportunity for our profession to come together and celebrate the positive changes that social workers make at all stages in their career supporting some of the most vulnerable families in our communities.

This year we're very proud to be sponsoring the Newly Qualified Children's Social Worker of the Year category. It's always inspiring to see the difference that nominees have been able to make at the start of their careers in this challenging but highly rewarding profession.

Congratulations to every one of you being recognised for your contribution and achievements and to social workers across the country who all deserve recognition for the hard work they do to support families and keep children safe.

Each and every one of you deserve recognition for your ongoing hard work and dedication – that's why events like these are so important, to take time to celebrate social work and the difference that you make every day.

This year we're very proud to be sponsoring the Newly Qualified Children's Social Worker of the Year category. Congratulations to every one of you being recognised for your contribution and achievements and to social workers across the country who all deserve recognition for the hard work they do to support families and keep children safe.

Every one of you deserve recognition for your ongoing hard work and dedication – that's why events like these are so important, to take time to celebrate social work and the difference that you make every day.

Sophie Wales, Service Director Children's Services at Barnsley Council, and lead Assistant Director for CSWM.

**The importance
of wellbeing isn't
lost on us!**

**Social care in Devon.
An opportunity to
grow your career
and your life.**



Working together as one big team to achieve better outcomes

Local authorities across Yorkshire & the Humber have been working together in a unique way for over 10 years. Collectively, we continue to work hard nurturing and supporting our children's social work workforce. As well as seeing staff grow in confidence and resilience, our investment in staff through training and development and offering good career progression opportunities, is improving our delivery of modern-day practice and our ability to make a difference in children's and families' lives. Our '[Improving Lives](#)' campaign illustrates how good social work practice can bring about transformational change in the lives of vulnerable children and young people.

To see why Yorkshire & the Humber is a great place to consider a career in social work and to check out the [jobs](#) available in our region, visit us at www.childrensocialworkmatters.org



PROTECT EMPOWER CHANGE



“ After feeling stressed and burnt out in my previous role, I joined Suffolk County Council over a year ago and I love working here! The support I get from my manager and my team lets me have as much of a work-life balance as social work will allow.

I have found the local authority to be flexible and sympathetic to the needs of me, my family and also the families we work with.

I feel like I enjoy my job more than I ever have and I've been doing social work for around seven years.

– Kayleigh Rayson, Social Worker –



If you are looking to grow professionally and further your career in social work, Suffolk can offer you a supportive practice where you can make a real difference to people's lives.

Working in Suffolk provides the opportunity to protect, empower and change the lives of those in our community, and make a real difference to the people in the county.

We are actively recruiting for Newly Qualified Social Workers, Social Workers and Senior Social Workers working with children, young people, and adults.

To find out more about these roles, why Suffolk is the ideal choice for starting or developing a career in social care, and the excellent benefits of working for Suffolk County Council please visit www.suffolk.gov.uk/social-work-suffolk

Social Worker of The Year Awards –Team Leader of the Year category sponsorship

Suffolk County Council are delighted to be a sponsor at this year's Social Worker of The Year Awards. First line managers are the bedrock of good social work services, we value them highly and that is why we chose to sponsor both Team Leader categories.

We are extremely proud of our Social Work Managers who go the extra mile every day to make a positive difference to both the lives of children, young people, and adults across Suffolk who need support. Our Team Leaders and front-line managers have been key in helping us to become rated by Ofsted as an 'outstanding' local authority for our services to children.

Social work in Suffolk is underpinned by a well embedded practice framework. Signs of Safety enables us to work in a truly person centred and solution-oriented way, but the impact of the last few years has been felt across the entire sector. It is with this in mind, Suffolk's Children and Young People Services and Adult Community Services have been reviewing the Signs of Safety model and integrated Trauma Informed and Restorative Practices, to ensure our teams continue to operate on the basis that people are pulled in, not pushed out. We aim to create a community around care, fostering within people a willingness to act in the right way for the right reasons. We find this approach empowers children, adults, and their families, to identify and resolve difficulties, empowering people to move closer each day towards realising their own life goals and creating sustainable change.

Suffolk is at the forefront of the future of social care, both in terms of practice and available solutions. Suffolk County Council is a founding partner of the new Integrated Care Academy (ICA) based in Ipswich at the University of Suffolk. The ICA works with partners across the sector to develop and deliver new education and training based upon research taken from a range of priority areas for both children and young people, and adult social care. The Council is also celebrating the first year of its new adult focused digital care service called Cassius, which during this current year has been responsible for introducing 2,600 pieces of new technology into 1,600 homes in Suffolk, helping to create and maintain people's independence for longer.

None of these significant successes for Suffolk would be possible without the support of our fantastic social workers, Team Leaders, and managers.

Thank you to all of you – you truly are amazing.



UNISON is very happy once again to be involved in this year's Social Worker of the Year Awards and to be presenting the Team of the Year, Adult Services Award.

Social workers have responded with extraordinary effort to the challenges the pandemic has thrown at them. This has been on top of their normal vital work in supporting and protecting individuals and communities. We are really pleased that through these awards they are receiving some well-deserved recognition for the work they've done

As the UK's largest trade union for social workers and the wider social care workforce, we know the challenges social workers face and the differences they make to people's lives. As an organisation built on solidarity and togetherness, UNISON would like to pay tribute to the social work teams that practice effective team working on a daily basis. Great teamwork, alongside high-quality professionalism is at the heart of excellent public service and social work.

We also applaud the social workers across the country who are taking a stand through UNISON against the wider challenges facing the profession like continued austerity, rising demand for services and growing caseloads. The fight for better working conditions and genuine development opportunities will result in better services for the public.

UNISON hopes that all the attendees have a fantastic evening.

Mike Short
National Secretary
UNISON



The London Borough of Lambeth are pleased to again be supporting the Team of the Year, Children's Services award at this year's Social Worker of the Year Awards. Congratulations to all nominees of this prestigious accolade.

Great teams achieve great things. England's Lionesses demonstrated just that this summer showcasing how togetherness, resilience and collective skill can achieve a brilliant outcome.

Similarly in social work, we know that teamwork and peer support are at the heart of outstanding social work practice and achieving the best possible outcomes for children and families.

In Lambeth, we aim to achieve this through our "Children at the Heart of Practice" framework which fosters a learning culture, excellent management oversight and group supervision, drawing on the collective resources of a team to provide support, reflection and encourage multiple perspectives.

We know that every day and in every part of the country, individual social workers can and do make a huge difference to the lives of children, young people and their families. We know too that when they are working as part of a powerful and well led team they can make an even more dramatic difference. This award celebrates high performing teams that are making such transformational impact.

We hope that all children's social work teams which are recognised at the 2022 Awards feel justly proud of their achievement and would like to express our deep appreciation to all teams who work tirelessly to improve the lives of children and families.

Brenda McInerney
Director, Children's Social Care



**ESSENTIAL
COVER
WHEREVER
YOU
WORK**

From
£1.30
a month

Worried about your job?
In these uncertain times there's never
been a better time to join UNISON.

For as little as £1.30 a month our members get:

- advice, support and help at work
- a helpline that is open until midnight
- legal help for you at work and your family at home
- plus a wide range of exclusive member discounts.

Annual salary	Monthly cost
Up to £2,000	£1.30
£2,001 - £5,000	£3.50
£5,001 - £8,000	£5.30
£8,001 - £11,000	£6.60
£11,001 - £14,000	£7.85
£14,001 - £17,000	£9.70
£17,001 - £20,000	£11.50
£20,001 - £25,000	£14.00
£25,001 - £30,000	£17.25
£30,001 - £35,000	£20.30
over £35,000	£22.50

UNISON – essential cover for you
UNISON is proud to sponsor the
Social Worker of the Year Awards

Lambeth Council
is proud to
support the Social
Worker of the
Year Awards



Sponsoring: Children's
Services Team of the Year

Join online at joinunison.org or call free on 0800 171 2193



The Social Work profession has endured extraordinary challenges in the last few years. With typical resourcefulness, Social Workers adapted their practise to integrate more technology, as one part of their response to the demands of the COVID-19 pandemic. With barely a moment to catch a breath, the cost of living crisis looms large, with Social Workers on the frontline once more alongside the most vulnerable people in society; Social Workers don't have the option to look away.

With tough times ahead, connection will be critical. Social Work is a team profession, yet many Social Workers now largely work remotely. Connecting, and looking after yourselves and each other, will be more important than ever.

The Social Worker of the Year Awards provides a vital opportunity to connect with, support, recognise and thank each other, which is why we are so proud to play a small part in the evening's celebrations. On behalf of the S12 Solutions team, I would like to congratulate this year's winners, finalists, nominees and event organisers; we hope you've had a wonderful time, and will continue to connect with, and celebrate each other, in the year ahead too.

Amy Manning

Founder and Managing Director, S12 Solutions, and Approved Mental Health Professional



TORBAY COUNCIL

We are delighted to be contributing to this prestigious event, and we are proud to be sponsoring the category of Student Social Worker of the Year. As a whole service, inspiring and nurturing the talent of student social workers is something we are extremely passionate about and deliver in practice through our acclaimed Learning Academy.

We are honoured that our commitment to our staff has been recognised in this year's Social Worker of the Year Awards, in being recognised as a finalist for the Supportive Employer Award.

We are thrilled to become a destination of choice for newly qualified and experienced social workers who recognise the learning and the continuous improvement environment from which they benefit and, importantly, contribute to.

Earlier this year, it was with great pride and humility we shared the news that a landmark judgment on our Children's Services had been published by Ofsted, in which the service was judged as 'Good' in all four areas of inspection. The report stated that "services for children in Torbay have significantly improved" and acknowledged this as an "impressive achievement".

On the day the 'Good' rating was announced, we celebrated through our own Children's Services Celebration Awards. It was a poignant reminder that we must never doubt how a collective group of thoughtful people can change a child's life, a sentiment which is echoed through The Social Worker of the Year Awards and the successes of the finalists.



Huge congratulations to all winners, finalists and nominees.
You are amazing.



An app and website that helps Approved Mental Health Professionals efficiently complete Mental Health Act processes.

s12solutions.com



TORBAY COUNCIL

Do the job you love in an environment where you can thrive.

Torbay Children's Services are currently recruiting new roles.
For more information about careers in social work visit:
socialworkjobs.torbay.gov.uk



Coventry City Council is proud to support University of the Year in the 2022 Social Worker of the Year Awards and congratulates all of the finalists on their fantastic achievement.

Councillor Pat Seaman, Lead Member for Children and Young People

In Coventry, we are passionate about creating a learning culture and as host to the West Midlands teaching partnership we have developed our offer for newly qualified social workers to create an environment where good social work can flourish, and children and families are at the heart of everything we do.

John Gregg, Director of Children's Services, Coventry City Council

Coventry is proud to support the University of the Year award; and as a Local Authority we have worked with universities to influence our award-winning Social Work Academy alongside the regional work of the West Midlands Teaching Partnership. We value and recognise the role of Higher Education Institutions in growing the Social Work profession through continuous professional development.

Universities play a critical role in workforce planning for the profession and the relationships with universities are critical if Social Workers are to be "ready for practice" and continually develop their careers, particularly in an environment which is requiring increased levels of practice innovation.

Congratulations to all finalists in this category!

Sarb Bhambra, Principal Social Worker, Children's Services, Coventry City Council



Why Coventry?

Join us in Coventry and you'll be delivering on the ground support to families with all the support and resources you need to do it. You will build on the progress we've made in the last two years and work with colleagues who are passionate about the city, its people and its exciting prospects. For more information come and speak to our staff or visit www.coventry.gov.uk/socialworkjobs



At Essex County Council we wholeheartedly recognise the importance of social care colleagues and of the social care practice. That is why we are thrilled to be a sponsor of these awards and even more thrilled to be sponsoring the Lifetime Achievement Award.

Working in social care can be one of the best jobs in the world but as you all know more than most, one of the toughest. Social workers are usually working with individuals; families, children and young people, at a time when they are in crisis or need them the most. It is a very privileged role we play in helping others and in trying to make a difference to their worlds and one we should all be proud of. Being able to recognise and celebrate the fantastic work and achievements of social care professionals is something very special and so well deserved. Long may it continue.

Congratulations to all of you nominated we hope you enjoy the celebrations, and we wish you all the very best of luck.



Helen Lincoln
Executive Director for Children, Families and Education (DCS)



Nick Presmeg
Executive Director, Adult Social Care (DASS)
Essex County Council



Essex County Council are proud to support the

Social Worker of the Year Awards 2022

Coventry City Council is proud to sponsor the Social Worker of the Year Awards and congratulates all the finalists on their outstanding achievement of great practice.



Staffordshire University is delighted to sponsor the Supporting Children in Education Award, celebrating social workers who have undertaken exceptional work in supporting children's attendance at school during the COVID-19 pandemic.

The COVID-19 pandemic required innovative responses across the whole of the education sector, to ensure that all learners were able to continue to access their learning. Education is critical in ensuring that children and young people can reach their full potential. Staffordshire University recognises its role as a catalyst for change in achieving this and in transforming people, places and society. In many ways, this commitment mirrors social work values and, as a higher education institution, we recognise the importance of social workers in the lives of children and families to promote and facilitate engagement with education.

During what was a difficult time for families, social workers played a pivotal role in ensuring that the most vulnerable children in our society could continue to attend school to meet their education needs, and their welfare could be safeguarded and promoted. The support offered by social workers to support children to attend school, reflects the University's values of being fair and inclusive, ambitious and inspirational. These are values that are fundamental to our teaching and learning at Staffordshire and have been embedded into our social work programmes. We are, therefore, proud and honoured to formally celebrate the important work that social workers undertook during the pandemic.

Mary Shannon

Head of Department Social Work and Wellbeing, Staffordshire University



On behalf of West Midlands Association of Directors of Adult Social Services (West Midlands ADASS), we are delighted to support The Social Worker of the Year Awards 2022 and sponsor the 'Digital Transformation in Social Work' Award which is a new category this year.

At West Midlands ADASS our focus is on improvement. That means doing things that improve the experience of social care for all adults who need it in the West Midlands, their families and their carers.

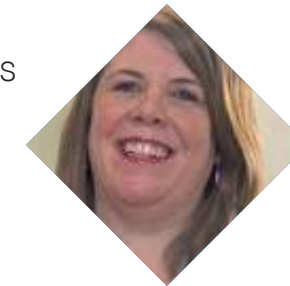
We are sponsoring this award to provide an opportunity to shine a light on the range of innovative and technology-enabled approaches that are being taken in social work to support people to live the lives they want to lead.

We hope that all nominees feel proud of their achievements and would like to express our appreciation to you all for your unending passion, advocacy and commitment to working with people and families to achieve the best possible outcomes.



Andrew Errington

Co-chair – WM ADASS
Principal Social
Work Network and
Principal Social
Worker – Coventry
City Council



Seanna Lassetter

Co-chair – WM ADASS
Principal Social Work
Network and Principal
Social Worker – Walsall Council



wm-adass.org.uk



[@wmadass](https://twitter.com/wmadass)



linkedin.com/adass-west-midlands

CONGRATULATIONS

TO ALL OF THE FINALISTS OF THE SOCIAL WORKER OF THE YEAR AWARDS 2022

Staffordshire University's Social Work team are delighted to sponsor the Supporting Children in Education category.

At Staffordshire University we prepare our students to be confident and skilled Social Workers.

Our students learn using cutting-edge simulation technology, alongside gaining real-world experience on placements within our wide network.

To learn more about our courses visit:

staffs.ac.uk



